

Q90

Mobile Payment Terminal

Linux OS | PCI PTS 5.x, SRED | 4G, 3G, WiFi,
Bluetooth | High Speed Thermal Printer |
4 Inch Capacitive Touch Screen | Optional
1D / 2D / QR code scanner



The PAX Q90 is a compact & stylish wireless mobile terminal packed with all the latest payment industry security and contactless certifications. It features optional dual cameras, in the front and rear, for 1D / 2D and QR code scanning, and offers a wide range of wireless connectivity options

including 3G, 4G, WiFi and Bluetooth. Combined with the processing power and longer lasting battery, the Q90 is the perfect wireless terminal for merchants wanting a suite of both payment and business applications.

FEATURES & BENEFITS

Stability & Reliability

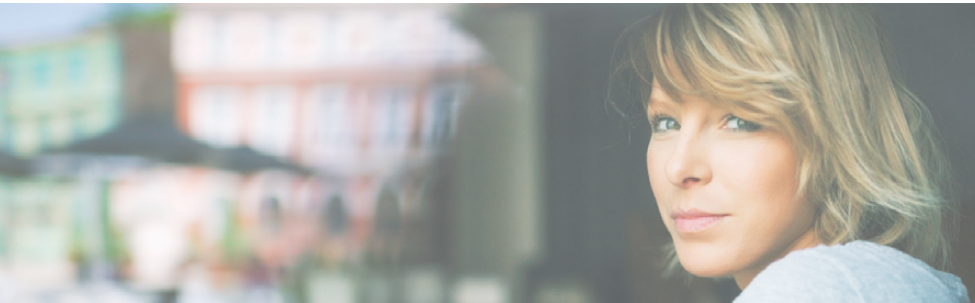
- Inbuilt contactless & NFC
- Advanced DDR technology
- Electronic signature capture
- Massive capacity Li-ion battery
- High speed application processor
- Large memory capacity
- Optional dual camera (front & rear) for 1D / 2D / QR code scanning

Secure Flexible Operating System

- PCI PTS 5.x, SRED
- Prolin based on Linux
- Simplified software application development
- User-friendly graphical interface
- Multitasking operating system application integrity
- Plug-and-Play functionality
- Easy to extend functionality

Multimedia Performance

- Adjustable stereo speaker
- Large capacitive touch screen
- Supports high resolution video, advertising, messaging, alerts



Q90

Mobile Payment Terminal

SPECIFICATIONS

Processor	Cortex A9 1GHz
Memory	512MB Flash, 512MB DDR Micro SD (TF Card) up to 32GB
Display	4 Inch 480 x 800 Pixel TFT Colour Touch Screen Supports Electronic Signature
Keypad	10 Numeric Keys & 5 Function Keys Back-lighting 1 User-defined Key
Card Readers	Magnetic Card Reader Smart Card Reader Contactless Card Reader
Communications	4G (FDD-LTE) / 3G (WCDMA) / WiFi / Bluetooth
Audio	Speaker, 90dB
Video	Support AVC / Mp4 / WMV / MPEG / MPEG-2 Encoder and Decoder
Printer	Fast thermal Printer: 35 lps Paper Roll Diameter: 40mm
Peripheral Ports	1 x Micro USB (OTG) 1 x RS232 (Mini USB) 1 x Audio Jack (optional)
Global Positioning	Built-in GPS, Support GPS positioning
Physical	L x W x H (mm) : 167.8 x 81.2 x 59.8 Weight (g) : 482
Voltage	Input: 100 ~ 240VAC, 50Hz / 60Hz, 0.2A Output: 5VDC, 2A
Card Slots	2 SAM, 1 SIM
Environmental	-10°C ~ 50°C Operating Temperature -20°C ~ 70°C Storage Temperature 10% ~ 93% Relative Humidity, Non-condensing
Battery	Li-ion Batteries, 2600mAh, 7.4V
Certifications	PCI PTS 5.x, SRED EMV L1 & L2 MasterCard Contactless Visa payWave

